

NOW AVAILABLE

FIRST TIME OFFERED BY PROPERTY OWNER



PROPERTY FEATURES

- Irreplaceable hard corner at the most prominent intersection in Midtown
- New Streetcar stop at this intersection
- 0.55 acre parcel
- 2,663 SF building

PROPERTY DEMOGRAPHICS



TOTAL POPULATION

1 mile: 18,081
3 mile: 114,718
5 mile: 265,665



DAYTIME POPULATION

1 mile: 18,479
3 mile: 133,091
5 mile: 196,452



AVG. HH INCOME

1 mile: \$84,634
3 mile: \$91,726
5 mile: \$94,421



NE CORNER OF ARMOUR & MAIN STREET

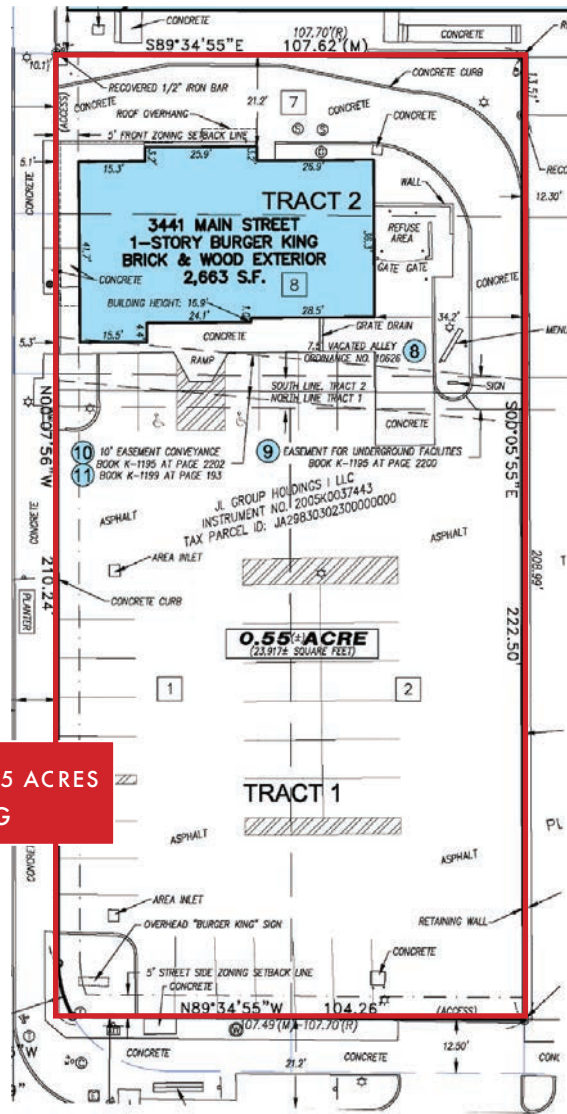
3441 MAIN STREET, KANSAS CITY, MO

913 914 7010
7121 West 79th Street
Overland Park, KS 66204

www.elevatepropertyadvisors.com



SITE SURVEY



**2,663 SF BUILDING ON 0.55 ACRES
CALL FOR PRICING**

